



RED ENGINEERING INC.

PORTLAND'S PREMIERE ALL-REDHEAD
ENGINEERING FIRM

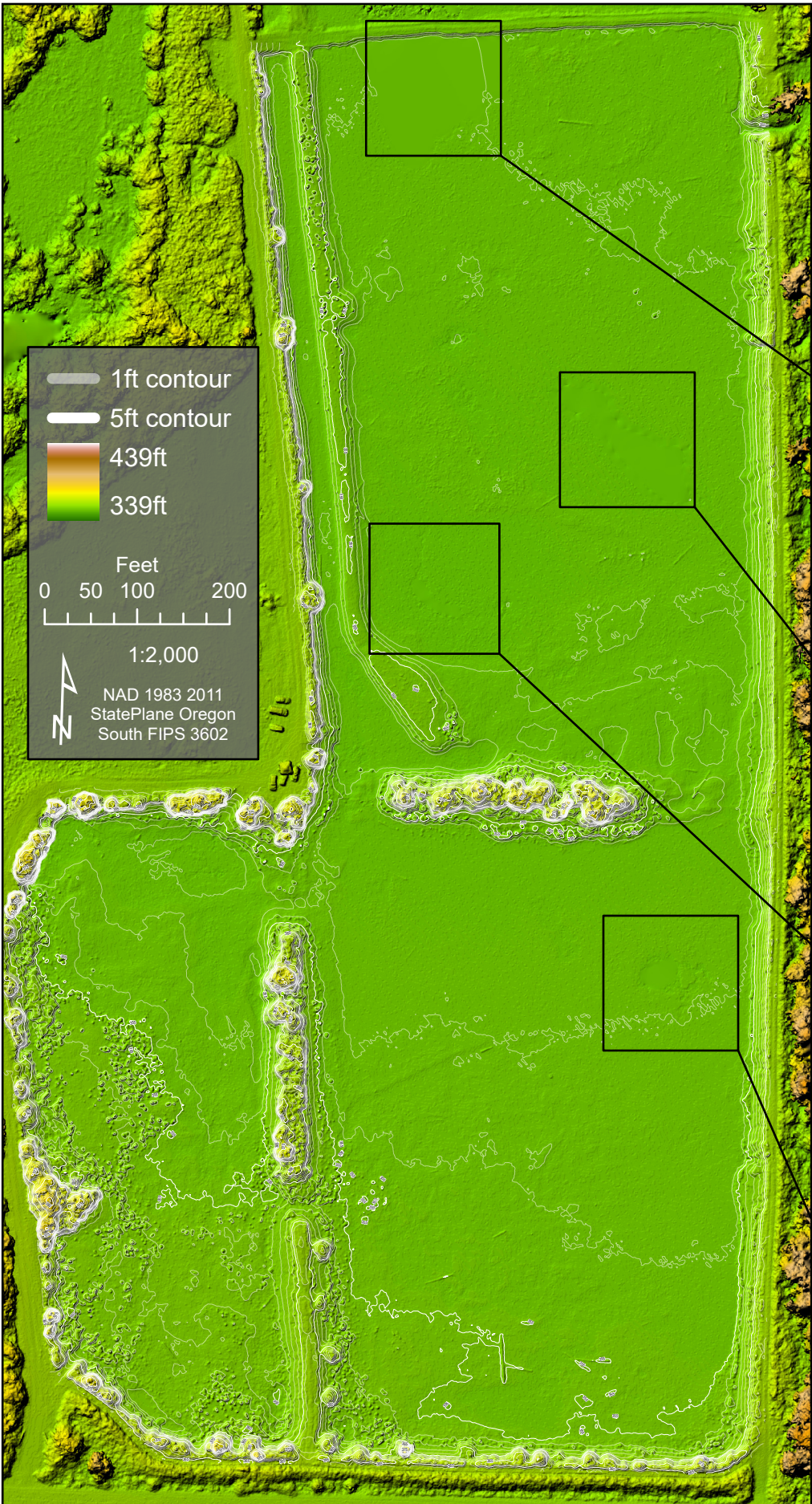
Client
Engineer
Site
Title
Date
Project #

North Douglas Betterment
Ben Stabley
Yoncalla, OR
Log Pond Baseline Survey
2023-08-27
630-252 Rev. B

Final DEM

North Douglas Betterment asked us to perform a sUAS survey of a log pond in Yoncalla, OR to establish a baseline before beginning further site improvements, remediation, and wetland restoration.

This mission was flown on a sunny day, and the few remaining pools of water created glare in the sUAS photography that required additional processing. Before performing the SfM workflow, we identified a few photographs with particularly strong glare to exclude from the dataset. After the orthomosaic and DEM generation, in ArcGIS Pro we used the Pixel Editor's "Interpolate from Edges" tool to manually smooth artifacts in the DEM from the pools.



Original DEM

True color ortho

